

UNIJJIN[®] INDUSTRIAL PRESSURE GAUGE

Model: P252 (Dry) / P258 (Oil Filled)



P252 (Dry) & P258 (Oil Filled) with bayonet casing models are designed for corrosive environment which do not have high viscosity or do not crystallize. Typical applications include Chemical, Petrochemical, Refining, Marine, Food Industry and etc. Systems or equipment with pulsating pressure or mechanical shock & vibration are apparent, the oil filled model is recommended.

Standard Specification

Dial Size (ø)

63, 80, 100, 160 mm

Scale Range (kgf/cm², psi, bar, kPa, MPa)

63 mm : -76cmHg ~ 0 to 0 ~ 700 bar
 80, 100, 160 mm : -76cmHg ~ 0 to 0 ~ 1000 bar

Blow Protection

Back, Rubber Disc (ø100, 160 mm)

Degree Protection

IP 65

Working Pressure

Steady: 75% of Full Scale
 Over Range Protection: 130% of Full Scale

Accuracy

63, 80mm : ± 1.6% of Full Scale
 100, 160mm : ± 1.0% of Full Scale

Working Temperature

Ambient : -20 ~ 60°C
 Process : Max 200°C, -20 ~ 80°C for Oil Filled model

Material

Case & Cover : SS304/SS316(option)
 Window : Tempered Glass/Safety Glass(option)
 Movement : SS304
 Element Tube : SS316L
 Connection : SS316L
 Oil Filling : Glycerin Oil / Silicon Oil(option)

Pressure Gauge Ordering Information

Model

P252 / P258

Mounting Type

- A: Direct bottom connection
- B: Bottom connection with surface mounting plate
- BD: Center Back Connection with panel mounting plate
- G: Lower back connection
- N: Lower back connection with panel mounting plate

Dial Size (ø)

63, 80, 100, 160 mm

Scale Range

Refer table manufacturing

Connection Type

- 1/4" BSPT, NPT, BSP
- 3/8" BSPT, NPT, BSP
- 1/2" BSPT, NPT, BSP

Options

- Oil Filled
- Adjustable Pointer

Example of Order

Model
P252

Mounting Type
A

Dial Size
ø100mm

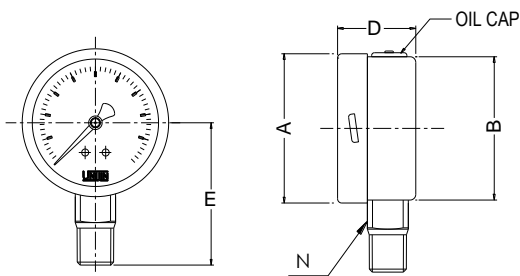
Scale Range
0~ 7 bar

Connection
3/8" BSPT

Basic Dimensions

Unit: mm

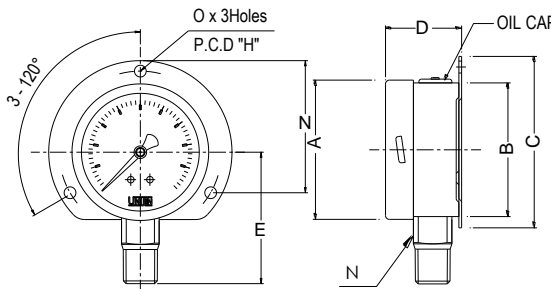
CODE A



A: Direct bottom connection

	ø 63	ø 80	ø 100	ø 160
A	64.0	81.2	100.6	160.6
B	62.0	78.5	98.6	159.0
D	32.7	39.5	49.5	52.5
E	41.0	50.5	65.0	94.0
N	14.0	17.0	22.0	22.0

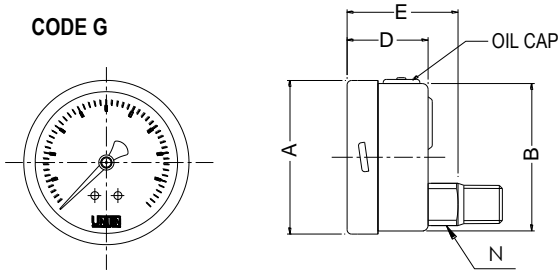
CODE B



B: Bottom connection with surface mounting plate

	ø 63	ø 80	ø 100	ø 160
A	64.0	81.2	100.6	160.6
B	62.0	78.5	98.6	159.0
C	79.0	108.0	122.0	196.0
D	35.7	43.0	53.3	56.0
E	41.0	50.5	65.0	94.0
H	78.4	95.0	117.5	178.0
N	14.0	17.0	22.0	22.0
O	4.3	5.0	6.0	6.0

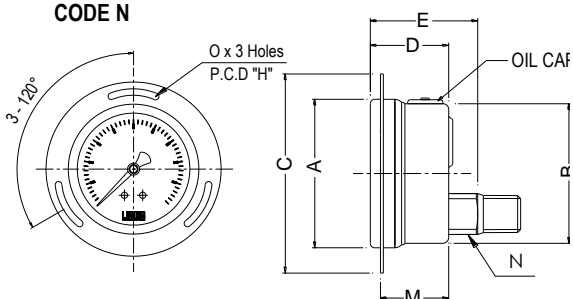
CODE G



G: Lower back connection

	ø 80	ø 100	ø 160
A	81.2	100.8	160.6
B	78.5	98.8	159.0
D	39.5	49.6	52.5
E	53.5	62.0	67.5
N	17.0	22.0	22.0

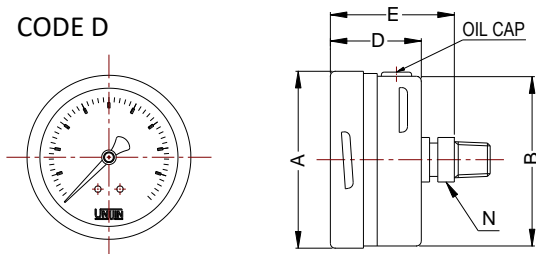
CODE N



N: Lower back connection with panel mounting plate

	ø 80	ø 100	ø 160
A	81.2	100.8	160.6
B	78.5	98.8	159.0
C	108.0	130.5	196.0
D	39.5	49.6	52.5
E	53.5	62.0	67.5
H	95.0	116.0	178.0
M	35.0	45.0	47.5
N	17.0	22.0	22.0

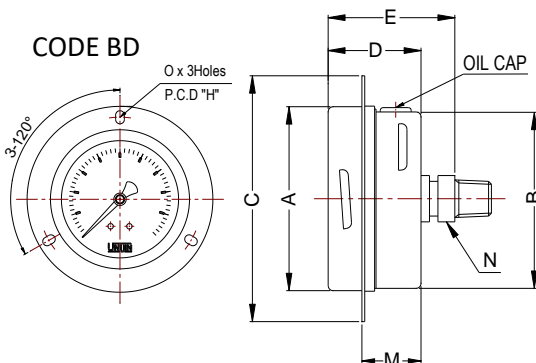
CODE D



D: Direct center back connection

	ø 63
A	64.0
B	61.0
D	33.0
E	45.0
N	14.0

CODE BD



BD: Center back connection with panel mounting

	ø 63
A	64.0
B	61.0
C	85.0
D	33.0
E	45.0
H	75.0
M	21.0
N	14.0
O	4.0